

Care Instructions



Quality certificate

Dear customer,

Your Dornbracht product has been assembled, tested and securely packed for you with the utmost care. It left our premises in perfect condition and we hope you enjoy your new Dornbracht product.

Should you nevertheless have cause for complaint, we look forward to receiving your feedback at mail@dornbracht.com.



www.dornbracht.digital/warranty

Important general information on cleaning

To maintain the value of your product, we recommend daily cleaning to prevent stubborn soiling.

Recommendations

- Use a mild liquid cleaner, e.g. alcohol-based, for daily cleaning.
- If slight limescale deposits form despite daily cleaning, clean them with a gentle citric acid-based cleaning agent.
- Please always use a soft cotton cloth to clean your product.

Attention

- Do not mix cleaning agents.
- Do not use any cleaning agents with an abrasive effect such as scouring agents, microfibre cloths, pads, etc.
- Cleaning agents with volatile acids such as hydrochloric acid, formic acid or acetic acid will damage your tap and should never be used. Cleaning agents containing chlorine bleach (sodium hypochlorite) must also not be used.

Aerator

Clean and descale your aerator regularly to ensure that the tap continues to function perfectly for as long as possible. The cleaning intervals depend on the intensity of use and the local water hardness.

- We recommend removing the aerator for cleaning. If necessary, use the enclosed aerator spanner or a coin to remove the aerator.

<https://dornbracht.digital/aerator-replacement-mem>

<https://dornbracht.digital/aerator-replacement-cyo>

<https://dornbracht.digital/aerator-replacement-tara>

<https://dornbracht.digital/aerator-replacement-meta-wrench>

<https://dornbracht.digital/aerator-replacement-meta>

- Then soak the aerator insert in warm water mixed with a mild citric acid-based cleaning agent. Always observe the maximum permissible exposure time and dosage specified by the cleaning agent manufacturer.
- Rinse off the cleaning agent residues with plenty of clean water and dry the aerator with a soft cotton cloth.

Shower heads

Clean and descale the soft water outlet nozzles regularly to ensure that the (hand, overhead, rain, side and rinsing showers) continue to function properly for as long as possible. The cleaning intervals depend on the intensity of use and the local water hardness.

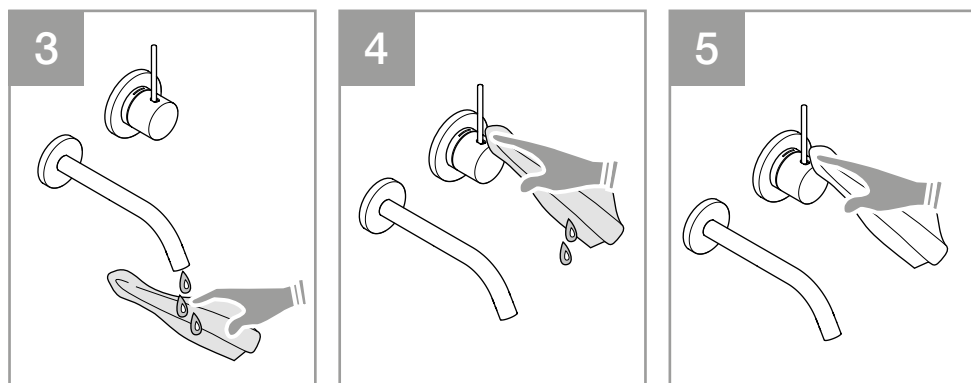
- Limescale deposits can be removed regularly by carefully rubbing the soft water outlet nozzles. This ensures an optimised beam pattern and prevents malfunctions.
- If the shower heads do become heavily calcified, you can remove this by soaking the underside in warm water with a mild citric acid-based cleaner. Observe the maximum permissible contact time and dosage specified by the cleaning agent manufacturer.
- Rinse off the detergent residue with plenty of clean water and dry the shower head with a soft cotton cloth.

Cleaning instructions for fittings



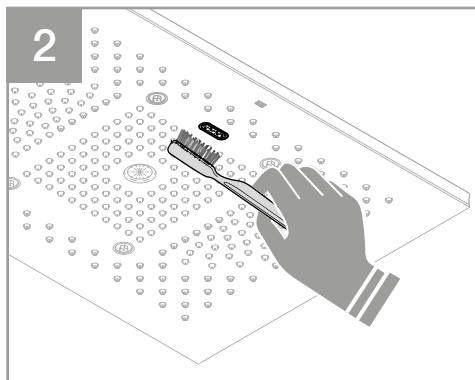
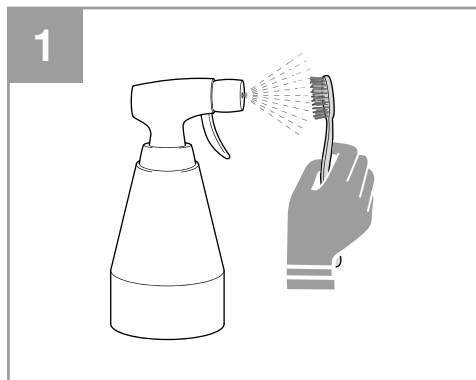
Only apply the cleaning agent to the cleaning cloth, never to the product, as the spray mist can penetrate openings and gaps and cause damage.

Always observe the maximum permissible contact time and dosage specified by the cleaning agent manufacturer.

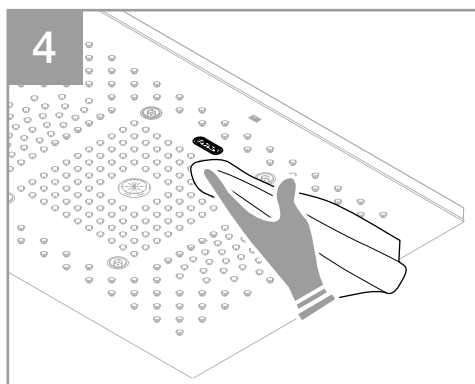
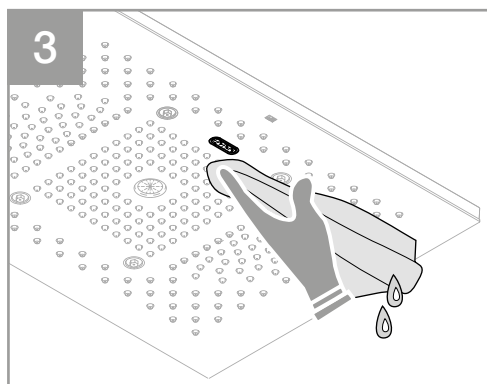


It is important to rinse thoroughly with clear water after each cleaning until all residues of the cleaner have been removed and then dry the product.

Cleaning instructions for massage aerator AQUAPRESSURE FLOW and COOL MIST



Only apply the cleaning agent to the toothbrush, never to the product, as the spray mist can penetrate openings and crevices and cause damage.



It is important to rinse thoroughly with clear water after each cleaning until all residues of the cleaner have been removed and then dry the product. The same applies to the COOL-MIST spray nozzle and the laminar spray.

Thermostats

To maintain the function of the control unit in the long term, it should be actuated once a month over the entire temperature range at full water flow.

Filter (dispenser)

Drinking water filters must be replaced in accordance with the product specifications.

Matt white plastic surface (AQUAMOON and RAINMOON)

Please clean this surface (matt white) with a damp, soft cloth and an alcohol-based cleaning agent. Acid-based cleaning agents should not be used.

Stainless steel surfaces (kitchen sink, Just Rain, Big Rain)

Clean and dry the surface as soon as possible after use.

Warm water is sufficient for light soiling. For heavier soiling, a gentle cleaner without abrasives and polishing agents can be added to the water. Rinse off the cleaning agent with plenty of clean water and rub dry.

Glazed steel (kitchen sink)

The surface should be cleaned with a soft, slightly damp cloth and a gentle cleaner (e.g. neutral soap). However, if slight limescale deposits do occur, these can be removed with a cleaner, for example one based on citric acid. It is important that the sink is rinsed with plenty of clean water after cleaning and then wiped dry.

Electronic fittings

Please note that the sensor eyes can be damaged by the use of abrasive cleaning agents.

If necessary, carefully clean the sensor eyes with a damp cotton bud and a small amount of cleaning agent. Then immediately remove the cleaner residue and rub the sensor eyes dry.

Mirror surface

Not all cleaning agents are suitable for the mirror surfaces. Chemical agents such as alkaline lyes or acids should not be used as a general rule. Glass cleaners can also damage the mirrors coating if used incorrectly over longer periods of time.

It is thus important to use large amounts of clean water. This avoids the abrasive effect of the dirty particles.

We recommended adding gentle washing-up liquid to warm water as an additional cleaner for stubborn stains. Wring out the window chamois well before you clean the mirror surface.

When you wipe the mirror dry, pay particular attention to the lower mirror edge. Remove any drips with a soft, dry cloth.

Mirror frame

For optimum care and cleaning of powder-coated surfaces, please observe the following recommendations:

Always use soft cloths or industrial cotton wadding and avoid strong rubbing.

Clean with just cold or lukewarm water to remove light soiling. You can also add ph-neutral or slightly alkaline detergents (e.g. washing-up liquid, soft soap or window cleaner) as an aqueous low-concentration solution.

The detergent temperature should not exceed 25 °C. To remove stubborn soiling, e.g. greasy or oily substances, you can clean with aromatic-free benzene hydrocarbons. Try it out on a hidden area first.

Do not allow detergents to work in for longer than one hour. If necessary, rinse again after 24 hours.

Rinse with pure, cold water immediately after cleansing.

Do not use scratching, abrasive or acidic detergents or strong alkaline detergents and wetting agents. Also avoid using organic solvents containing esters, ketones, alcohols, aromatics, glycol ethers, halogenated hydrocarbons, or similar chemicals. Scouring milk or similar products will roughen the surface making it unsightly, so do not use them.

Special instructions for surfaces

Dornbracht uses different coating technologies to offer all relevant colour schemes. Not every colour shade can be produced with every coating technology. The optimum coating process is selected for a particular surface.

Please observe the general cleaning instructions listed above when cleaning our surfaces.

Below you will find care instructions for our surfaces.

Gold surfaces

We use a gold coating of up to 23.9 carats for our gold surfaces. The use of real gold makes the surfaces particularly precious. During daily use, surfaces with gold content can be abraded or damaged by harder materials, for example scratches can be caused by rings and sanding marks by the use of excessively hard care cloths (coarse microfibre cloths) or abrasive care products.

PVD surfaces

PVD technology is used to create a smooth, fine-pored surface with good scratch and wear resistance.

Care

- To increase fingerprint resistance, we recommend a stainless steel care oil, which creates a fine film of care oil on the surface.
- It is important to apply this oil sparingly and evenly. This protective film should be refreshed regularly as required.
- Contact with adjacent sensitive surfaces such as natural stone or untreated surfaces should be avoided as this can lead to stains.

Dornbracht GmbH & Co. KG
Köbbingser Mühle 6, D-58640 Iserlohn
mail@dornbracht.com, dornbracht.com